

**WET  
& DRY  
USES**

skyVac



**UP TO 4 STOREYS  
12M/40FT**

**FEATHERWIEGHT  
POLES AT JUST  
280G PER 1.5M**

**PULL START  
OR KEY START  
OPTION**

**COMPLETELY  
INDEPENDANT  
MOBILE & SELF  
POWERED.  
NO NEED FOR  
MAINS POWER.**

**CLEAN HIGHER.  
FASTER & SAFELY  
FROM THE GROUND**

**ON-BOARD  
HONDA ENGINE**

**EVERYDAY DOMESTIC & COMMERCIAL USE**

The skyVac® Interceptor Wet & Dry Gutter Vacuum with on board Honda power plant is the ultimate gutter vacuum system. Inspired by the Industrial 85, our design team wanted to create a completely power independent system, so no need for mains power or generators. Boasting 155 Inch Water lift, the lift capacity is immense, for fast results - first time.

We've increased the drum size, added a drain hose to remove water, offered an optional sieve basket - so whether you are dealing with gutter sludge, tufts or dry leaves you can power bigger projects - with less down time.

Sitting on a robust all terrain multi directional trolley, the skyVac® Interceptor features an on-board power plant making it completely independent of any electrical supply requirements. Powered by a robust worldwide compliant Honda engine, means this unique system can clean anywhere in the world at any time.

Designed specifically with the user in mind, the skyVac® Interceptor is housed on an all-terrain chassis allowing you to manoeuvre the system down side paths and narrow spaces with ease.

With an extremely powerful vacuum capacity, this unique system will lift and remove the heaviest of waste matter from gutters up to 40ft from the ground, with the added addition of a blow feature to aid cleaning and self-un-blocking.



## IDEAL FOR:

- Gutter cleaning (up to 4 storeys high)
- Industrial and commercial gutter cleaning for wet and dry application
- Immense lifting capability for the most stubborn gutter growths
- Robust all terrain trolley with castors



Platinum Trusted  
Service Award

2023

feefo



### Machine Specification

Motor Wattage:	3600 Watt (5.5HP Honda Petrol Engine)
Water Lift:	155"
Air Flow Movement:	8,000 LPM
Cyclonic Entry Port:	50mm
Container:	90 Litre
Weight:	78kg Pull Start / 87kg Key Start
Decibel Level:	107 dB
Mains Connection:	240V @ 13amp / 110V @ 32amp
Dimensions (cm):	140(l) x 63(w) x 104.5(h)

### Included as standard



7.5M Reinforced Hose



ELITE End Tools &  
135° Hairpin Neck



Carry Bag

## Mobile Wet & Dry Industrial Gutter Vacuum

### Optional Add Ons...



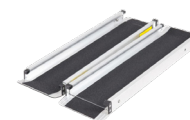
Sieve Basket



skyVac® Cartridge  
Filter



skyVac® 'Real-Time'  
Inspection System



Telescopic Ramps

### Plus...

#### Clamped 4 pole package



ELITE Vac  
Release Pole

Available in 6 pole &  
8 pole package

4 POLES - reach 6m/20ft  
6 POLES - reach 9m/30ft  
8 POLES - reach 12m/40ft



WEB EXCLUSIVE  
12 MONTHS  
Manufacturers' Warranty



30 DAYS  
Money back Guarantee



SPEEDY  
Free Delivery

T: 01604 968700 | E: info@spinaclean.co.uk