



Machine Specification | EXTERNAL USE

Motor Wattage:	2800 Watt (2x 1400 Motors)
Water Lift:	110"
Air Flow Movement:	7,166 LPM
Cyclonic Entry Port:	50mm
Container:	45 Litre
Weight:	17.2kg
Decibel Level:	74 dB
Mains Connection:	240V
Dimensions (cm):	50(l) x 50(w) x 78(h)



Clamped Pole



POLE TYPE:	CLAMPED
Material:	Carbon Fibre/ Fibre Glass Hybrid
Weight per 1.5m:	350g
Diameter:	50mm
Length:	1.5m
Reach:	4 Storeys / 12m / 40ft

Packages include

· 1.5M Suction Poles (50mm) · 1 x Vac Release Cuff · 1 x Anti-Block Hairpin Neck tool holder · 5M Wire Reinforced 50mm Suction Hose
· 5 x Gutter End tools · 2 x Cuffs · skyVac® Pole & tools Carry Case

Floor Tool kit: 3 x Brush Heads 1) Carpet 2) Hard floor 3) Water pick up. Handle (3 sections)

Available with 4, 6, or 8 poles



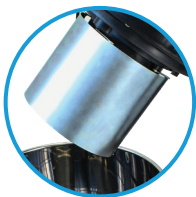
Vac Release Cuff

**Hairpin Neck
Tool Holder**

Patent Pending
No: GB1713830.6

EU Registered Design
No: 008458913

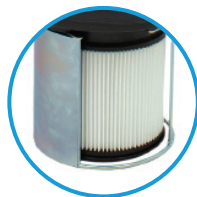
Key Features



**Steel Filter
Protection Plate**



Blow Function



**Removable
Washable Filter**



**Carbon Fibre / Fibre
Glass Hybrid**



**4 x Multi Dircional
Castor Wheels**